

MISSION STATEMENT

We connect the future,
through the present,
with the past.

2025 Programs & Events

All programs are free and open to the public unless otherwise noted.

Events

August 2.....Joyce Daze Festival Booth
August 14-17Clallam County Fair Boot

Programs

July 12.....History Program: Mid Valley Farm with North Olympic Land Trust
August 22.....History at the Hub Night 4PM
August 24History Tales: Puerto de Nuestra Senora de los Angeles-Spanish Explorations and Interactions on the North Olympic Peninsula.
September 20.....History Hike: Clink Bridge*
September 27.....LOL: Excavations at the Jamestown Veterans Memorial: Exploring The Jamestown Picnic Site.
October 19.....History Tales: Survival stories from the January 1700 earth quake and tsunamis.

**History Hikes are paid programs; tickets are available from the Jefferson County Historical Society (www.jchsmuseum.org). Program cost is \$45 for members of NOHC and JCHS; \$60 for non-members.*

Olympic Outdoors Exhibit Opens to Packed House



Left: Larry Lang answers questions at the conclusion of his talk.

Over 100 people packed the house for Larry Lang's History Tales presentation on the Photography of the McClinton Brothers at the opening reception for our Olympic Outdoors exhibit. We signed up new members, sold lots of books and Tshirts and enjoyed meeting some new history enthusiasts. The exhibit is up until the end of August, so you have plenty of time to check it out if you couldn't make it to the reception. Our thanks to the North Olympic Library System for their support and partnership.



Displays are throughout the library.

From the President

This Spring has been very busy at the Center. Many of you may have noticed several press releases from the City of Port Angeles concerning the sale of our campus to the city. Unfortunately much of the information from the city was not entirely true. The City's offer of \$599,000 does not come close to the minimum estimated cost of constructing a new curatorial building (\$3 million). More information on the City's offer and our cost estimate for constructing a new building is available in the press release available on our website's News page. On June 17 Executive Director David Brownell and several board members, other NOHC supporters, and myself, attended the monthly city council meeting. David gave a brief presentation expressing our views and our wish to continue with a productive relationship with the city. Our intent is to proceed with our plan publicized in November 2023, to sell our northern acre of land and use the proceeds to remove the school building. If anyone has concerns or questions please reach out to David or myself.

As I mentioned it's been a busy Spring. Our current exhibit, Olympic Outdoors, opened to a great crowd at the Port Angeles Library. If you haven't had the chance to see it please do. Our dedicated volunteers took part in community events, hosted tours, and a open house. They recorded over 500 hours of volunteer time in the month of May alone! Our community outreach continues to expand as we fulfill our mission, to connect the future, through the present, with the past.

Bruce Murray

Fundraiser August 22th

HISTORY AT THE HUB

**Come out to support the
History Center, get your
hands on some history, and
have a great time**

Music! Fun! Drinks!

Live Auction!

August 22, 4 – 8 PM

**We are
looking for
donated items
for the
Live Auction.**



**N. Lincoln at Front St.
Port Angeles**

Salmon - A Way of Life on the Olympic Peninsula



Outside Rhebeck's Sporting Goods and Lunch Room on July 4th, 1939, are Alex Pappas, a papermaker at the Crown Zellerbach Mill, Milt Rhebeck, son of Frank Rhebeck who owned the store, and Jack Henson, the "Wandering Scribe" reporter for the Port Angeles Evening News. Photo oppsite shows the inside of the store, known as the "Home of the Wooden Fish" or "Rhebeck's Den" with Frank Rhebeck at the counter and in the far back left corner Jack Henson enjoying a beer.



Displayed from the ceiling are cutout wooden fish with the name of the fisherman and weight of the fish. NOHC archives has a collection of these wooden fish.

NOHC Volunteers Out and About

Volunteers from the NOHC are out and about in the community at many events throughout the year. Look for our booth this August at the Clallam County Fair!

Big Spring Spruce-Up Fun



The NOHC was well-represented at the Big Spring Spruce-Up this year, with a team of 12 volunteers taking on the city pier and parking lot – removing over 2,000+ pounds (yes, they weighed the truck!) of weeds, trash and debris. We had great weather and lots of smiles – the Spruce-Up event brought out over 100 volunteers to clean up downtown and get our community ready to greet summer visitors!

Eddie Makes a Splash at Maritime Festival



Our new “face-in-the-hole” board featuring our favorite local sea monster Eddie was a big hit with folks of all ages at the 2025 Port Angeles Maritime Festival. We had a great time meeting new visitors, listening to live music and signing up new members. We will be back again next year!



Tee shirts are for sale in our Research Library!



Get In On The Fun - Summer Work Week 2025!



We are recruiting volunteers for our 2025 Summer Work Week – would you like to help?

When: July 21-25, 2025 (9 AM – 4 PM)

Where: NOHC Campus

What: Painting, cleaning, moving, lifting, organizing... you name it! This summer, we will be knocking out as many items from our “to-do” list as possible. We have tasks for all levels of abilities, though most involve a moderate level of physical labor. You don’t have to sign up for the week – even a single day helps! If you would like to learn more or to RSVP, please contact us by phone or email.

NOHC Sponsor and Presentation at 2025 Cultural Resource Summit

The Center was a proud sponsor of this year’s Summit at Suquamish, an annual conference that brings together cultural resource consultants, historic preservation professionals, regional tribes, museums and cultural institutions. Director Brownell presented a “lightning talk” on the online research resources available on the North Olympic Peninsula: the online collections catalogs of the NOHC and the Jefferson County Historical Society, as well as the Jamestown Tribe’s online museum, the House of Seven Generations. It was a great opportunity to connect with others in our field and increase awareness of our digitization work.

NOHC Takes County Lead in America 250

The Center has taken the lead on coordinating America250 planning efforts in Clallam County. 2026 will mark the 250th anniversary of the signing of the Declaration of Independence, and we are part of broader efforts nationwide to commemorate this occasion. We are currently hosting monthly planning meetings with staff from local municipalities, nonprofits, community organizations and Clallam County Commissioners. Our 2025 Clallam County Fair booth will have more information on these efforts, and appearances by local George Washington portrayer Vern Frykholm.



If you’re interested in learning more or getting involved, please contact: David Brownell, Executive Director, North Olympic History Center
933 W. 9th Street, Port Angeles, WA
artifact@olypen.com
(360) 452-2662

Printing Blocks Bring the Past to Life



Carole Rodgers, NOHC volunteer.

If you have stopped by our artifact storage facility in the past 6 months, you may have noticed dozens of boxes and trays spread across multiple tables and wondered to yourself – what's going on there? Volunteer Carole Rodgers has taken on the monumental task of sorting and identifying our collection of printing blocks. Hundreds of blocks, many of which were used by local historical printers and publications like the Port Angeles Evening News, are being arranged and classified into a trackable system that will give us better control over the collection and make them more readily available for use in various projects. Want to see them up close? We will have many of our blocks available for making custom prints at our History at the Hub event on August 22. Come have some fun and get your hands on some history!

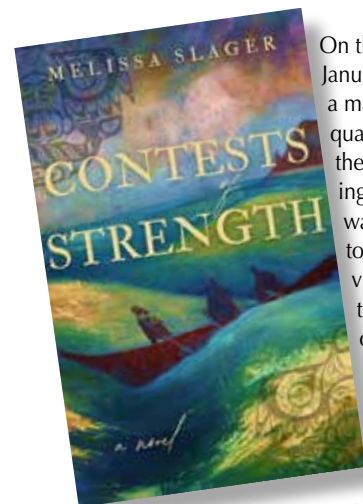


Clallam County Heritage Advisory Board Tours NOHC



Executive Director David Brownell gave a tour of our campus and facilities to the Clallam County Heritage Advisory Board on June 17. The tour included updates on various projects we have completed with Heritage Advisory Board grant funding like our hanging art storage racks and digitization work. The Heritage Advisory Board, which is responsible for advising the Clallam County Board of Commissions on matters related to the preservation of the cultural heritage of Clallam County, were impressed with all the work we are doing to preserve and share the cultural heritage of our county.

New Book For Sale



On the night of January 26, 1700, a massive earthquake struck off the coast, sending a wall of water barreling toward seaside villages, from the coastlines of Vancouver Island to northern California. Learn about the

impact of this devastating tsunami, and what's being done today to prepare for the next **Big One**.

Author Melissa Slager, a journalist and writer from Everett, will be our October 19 History Tales presenter, discussing her deeply researched historical novel, *Contests of Strength*, about the 1700 earthquake event and its impact on traditional Makah lands.

Learn more at melissaslager.com.

Port Angeles Printers Through the Years



Peninsula College Internship Program Begins!

We would like to welcome Rex Sears, our new intern from the Peninsula College history program. Rex will be learning our digitization process, from selecting and scanning images, entering them into our PastPerfect database and adding applicable metadata. He is working on our collection of historic postcards, so make sure you check our online catalog (nohc.catalogaccess.com) to see new items being added every month!

Rex's internship is supported by the NOHC Scholarship Fund. If you would like to donate to the scholarship fund and support future internships, please contact the Center or mail a check with "Scholarship Fund" noted on the check.



Our new intern, Rex Sears, scanning images.

Webster Collection

Current project by volunteer Larry Lang is scanning the E.B. Webster collection of nearly 300 large format film negatives. At this point approximately one half of the collection has been scanned. When completed the collection will be available to the public on our website. (All photos circa late 1910s)



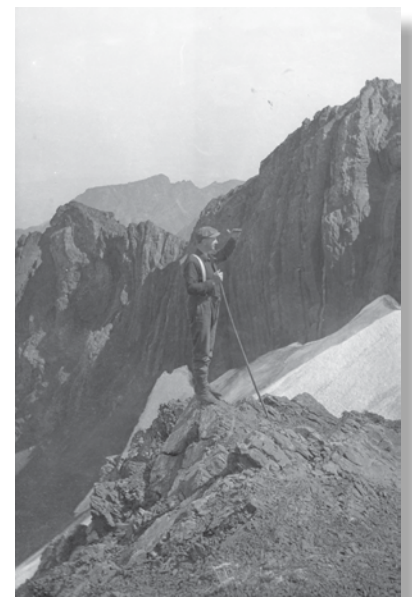
Outing on a hand cart either on Little River Railroad or the Spruce Railroad.

NOHC Hosts an Open House of Our Research Library and Archival Storage

Our open house on June 25 brought some new faces and familiar friends to the Center. Visitors enjoyed checking out our Esther Webster exhibit in the library, and tours of our Artifact Storage Facility with Director Brownell and former Director Kathy Estes. If you missed out but would still like a tour, contact us to set up a private tour and see all of the work we are doing to preserve and share our local history.



Doing laundry at the Olympic Hot Springs. Note the hand cranked wooden washing machine.



E.B. Webster on Klahhane Ridge

The Mail Must Go Through - Part 2

What do we know about how mail services evolved on the North Olympic Peninsula?

The NOHC received an archive of postmarks, covers, and postcards from Chester Masters (1936-2019), a well-known philatelist from Sequim. This archive has a piece of canceled mail from every post office that has operated on the North Olympic Peninsula from Port Townsend to Queets. For each post office he added a map showing where the post office was located, wrote a short paragraph detailing its history, often adding postmasters and postmistresses who had cancelled the piece included in the archive, and location changes which often required a new name, listing all of those. Is it **Sequim**, **Seguin**, or **Sequin** – we have postmarks for all of them.

Naming post offices was often an intricate dance, like the one between the sister communities of Sekiu and Clallam Bay. The first post office to be founded was Clallam Bay, 1847, in West Clallam (later Sekiu). In 1894, the word Bay was dropped from the name and gave the community of East Clallam the opportunity to use the name Callam Bay, which it did fourteen years later. The Clallam post office was discontinued December 31, 1911. In 1917 it was revived as the Sekiu post office.

Our cancelled cover (an envelope printed especially to commemorate/promote) is an East Clallam envelope cancelled January 23, 1893, by postmaster Rodney S. Dimmick and proclaims: "East Clallam, Washington, Gem City of the Straits. Shipping Port of Western Clallam County, a territory 25 x 60 miles in extent. Thousands of acres of Government land. Millions of feet of timber. Good Mineral prospects. Headquarters for pack trains to Beaver, Forks, and Quillayute prairies, Hoke (Hoko) and Dickie Rivers and Ozette Lake. Immigration is needed."



Promotional Cover Washington Territory 1893 advertising the benefits of immigrating to the area.

The last sentence has a wealth of information about how the mail was moved and where.

As more roads were built to get loggers deeper

into the local forest and more and more trees were felled to feed the building boom happening all along the Strait and the Pacific coast, bigger and bigger lumbering operations were attracted to the area as were more settlers because more and more land was being cleared of trees. As early as the 1880s, local do-it-yourself railroad companies started to spring up, including one in Port Angeles built by Ishamel Filion that had wooden rails and was used to move lumber to the Filion Mill. "The Chicago Milwaukee St. Paul and Pacific line was built from Port Angeles to Port Townsend, then to the West End, where several log camps cropped up: Port Crescent, Ramapo, Joyce, Majestic and Twin, near Twin Rivers, which was the terminus for the Milwaukee line and a major logging community in Clallam County. Olympic Discovery Trail runs mostly along the vacant Milwaukee right of way today." Chew, J. (2011)

With the spur lines, logging camps became towns, and the mail was transported via rail rather than by mail packet ships, boats and canoes, and horse or oxen teams. As the timber was depleted in one area, the spur lines were taken out and transported to new locations. The railroad lines determined which towns would live and which would die, their post offices along with them.

The stories about the post offices themselves didn't die. Especially the naming stories.

Some post offices were named for creeks and rivers, like Beaver (1889-present) - named for the abundant beaver that lived in Beaver Creek -- where a former logging camp, the Lake Tyee Forest Camp was built. The Bogachiel post office name came from the Quileute word meaning "muddy river" since even a little rain will muddy it and was active May 24, 1892 – Jan 31, 1912.

Others were named to remember where the white settlers had come from. These including Carlsborg: C. C. Ericksen was born in Carlsborg, Sweden and named the mill town where the post office was opened in 1917 in the mill's cook shack. Some commemorate a person, like Gettysburg at the mouth of the Lyre River. In the late 1880s Robert N. Getty, a prosperous Pennsylvania farmer and lumberman, homesteaded a huge piece of land and named it Gettysburg. He opened a general store, obtained a post office which operated from March 1890-Nov. 1926, and encouraged logging firms to build skid roads to Gettysburg as a shipping port. Then there is Sappho, named after the Ancient Greek poet (630-c. 570) from the island of Lesbos and known for her lyric poetry meant to be sung while accompanied by music.

One of the best naming stories is about Sequim.

The first non-native settlers to the North Olympic Peninsula arrived in the early 1850s and began to at New Dungeness, several miles to the east of its present location at the head of Washington Harbor. Between 1879-1907 the name of the settlement was Seguin - "such-e-kwai-i" meaning "quiet waters" in the Klallam language.

The current pronunciation - skwim - is a corruption of the original because white settlers had difficulty saying it correctly.



Envelopes showing 1905 Seguin and 1917 Seguin postmarks.

During that same time the Port Angeles newspapers always listed the town with the spelling "Sequim" whether by accident, misunderstanding, or intentionally is debated. In 1907 Sequim became the default spelling and name.



Sequim, Wash postmark used from 1907 to date.

However, around 1917 the town had a brief fling with the name "Sequin." While the <https://www.>

Continued page 7

The Mail Must Go Through continued

sequimwashington/sequim-history site claims, "Historically the name has always been "Sequim". Anything else would be a typo in reference to this area," we have a postmark showing that Sequim was in play. Additionally, there are accounts by local pioneers who remember Sequim being used for several years.

There are lots more post office stories begging to be found in Masters' collections. Stories that reflect the ways the mail was carried, who founded post offices, who ran them, peripatetic post offices that changed locations but retained the same name, and those that died.

The postcards in this collection not only give a time and a location but reveal insights into the lives of those who lived on the North Olympic Peninsula and depended on the mail for connection to others. They highlight big and small events and provide a tangible link with our shared history.



This postcard from Gettysburg keeps a family updated in 1914



This photo postcard, taken locally, touts the green thumb of H. "Al" Wesseler as he displays an 18 lb. white turnip and "sky-scraping" oats grown in Ozette in 1903

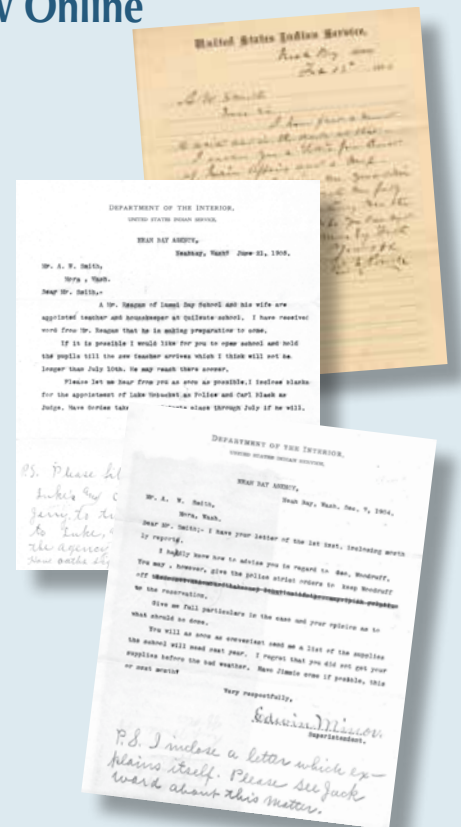
Visit Masters' archive at our Past Prefect Online catalog <https://northolympichistory.org/> Or use the link below to access it directly. <https://nohc.catalogaccess.com/archives/36144>

Chew, J. (2011, February 14). Railroads gone, but left mark on Peninsula; train lines often determined a town's status. Peninsula Daily News. <https://www.peninsuladailynews.com/news/railroads-gone-but-left-mark-on-peninsula-train-lines-often-determined-a-towns-status-gallery/>

A.W. Smith Collection Now Online

A.W. (Alanson Wesley) Smith moved from Dakota Territory to Neah Bay in 1876. The following year Alanson began teaching at the Neah Bay Indian Agency School. In 1883 A.W. was appointed as teacher for the new agency school at La Push, remaining there until he left in 1905 to pursue a career with the Forks Co-operative Creamery. The A.W. Smith Collections contains some of the earliest written records of the Quileute language.

In 2025, the Quileute Tribal School received a grant from the Clallam County Heritage Advisory Board to digitize the collection. The work was completed this April by Quileute Cultural Resources Specialist Julia Ratliff, and the digitized materials were catalogued by NOHC volunteer Caleb Newgard and are now available online, searchable on our catalog access site by searching for A. W. Smith in the Collection field. The Quileute Tribal School received a copy of the digitized materials for their language program, and we look forward to continuing working together with the Quileute Tribe to "connect the future to the past, through the present."



Progress Report: Restore the 4

Fundraising efforts have kicked into "full steam" as we proceed into phase 2 of the Restore the 4 project this summer. Phase one, removal of asbestos from the boilers has been completed. Phase two will begin in July with the pouring of a concrete foundation and installation of the uprights for the future canopy. When the foundation is completed, restoration work will begin on the engine, to be followed by the installation of the canopy roof and painting of the engine and canopy.

We are currently reaching out to organizations like service clubs, businesses, and others for financial support. We have raised approximately \$160,000 of the our \$250,000 goal – we need to raise at least another \$90,000 to complete the project. The Center will be supporting these efforts with information at our 2025 Clallam County Fair Booth. You can learn more about the project and donate at restorethe4.org/



Artist illustration of future canopy



www.northolympichistory.org



www.nohc.catalogaccess.com
New items added each month!

Nonprofit Org
U.S. Postage
PAID
Olympic Mailing
& Printing

P.O. Box 1327, Port Angeles, WA 98362

Address Service Requested

Research Library

933 West 9th Street, Port Angeles

360-452-2662

artifact@olypen.com

Open - Tuesdays & Thursdays

9 am - 2 pm or by appointment



Newsletter Sponsor

Sponsorships

Your support and partnership play a key role in the success of NOHC. Interested in helping to sponsor our newsletter? Please contact Executive Director, David Brownell at artifact@olypen.com or 360-452-2662

Sponsors

Ron Allen

Abigael Brownell

Joe Corn

Jack & Eve Datisman

Bud & Laurie Davies

Paul Gleeson

Steven Hargis

Suzanne Hayden

Phyllis & Ed Hopfner

Jean Luebbert

Margaret McGee

Shelly Reiss

Becky Schurmann

Larry & Robin Sweeney

Norm & Caria Tonina

Randy Volker

Patron

Barbara Fitzgerald

Benefactors

Virginia Fitzpatrick Estate

Joanne Hughes

Larry Lang

Richard McCammon Trust

Paul Eleanor Naddy Fund

Allen Osterberg

Jan Whitlow

Corporate Sponsor

Brownell Aeroderivative Consulting

Membership

We connect the future,
through the present,
with the past.

Thank you for supporting the **North Olympic History Center**. Your generosity will help us connect with our north peninsula communities by increasing our outreach efforts including programs like our History Tales and Learning Our Landscape presentation series, creating new exhibits, adding to our ever growing digital library and artifact collection, and supporting our research facilities while maintaining our center's legacy as a community resource, sharing the region's cultural heritage for the enjoyment and education of us all.

Become a member, give the gift of membership, or make a donation.

Name _____

Address _____

City/State/Zip _____

Phone _____

eMail _____

The North Olympic History Center is a 501(c)3 non-profit and donations are tax deductible.

☐ Senior/Military/Student \$30

☐ Individual \$40

☐ Family \$50

☐ Sponsor* \$150

☐ Patron \$250

☐ Benefactor* \$500

☐ Corporate Sponsor* \$1,000

☐ Other \$_____

In addition to my membership
I would like to support.

☐ Scholarship Fund \$ _____

☐ Exhibits \$ _____

☐ Archival Supplies \$ _____

Please make checks payable to
NOHC and mail to:

NOHC, P.O. Box 1327,
Port Angeles, WA 98362

Credit cards accepted at the Research Library



* Sponsors, Patrons, Benefactors, and Corporate Sponsors will be acknowledged in our Strait History Publication and website.